

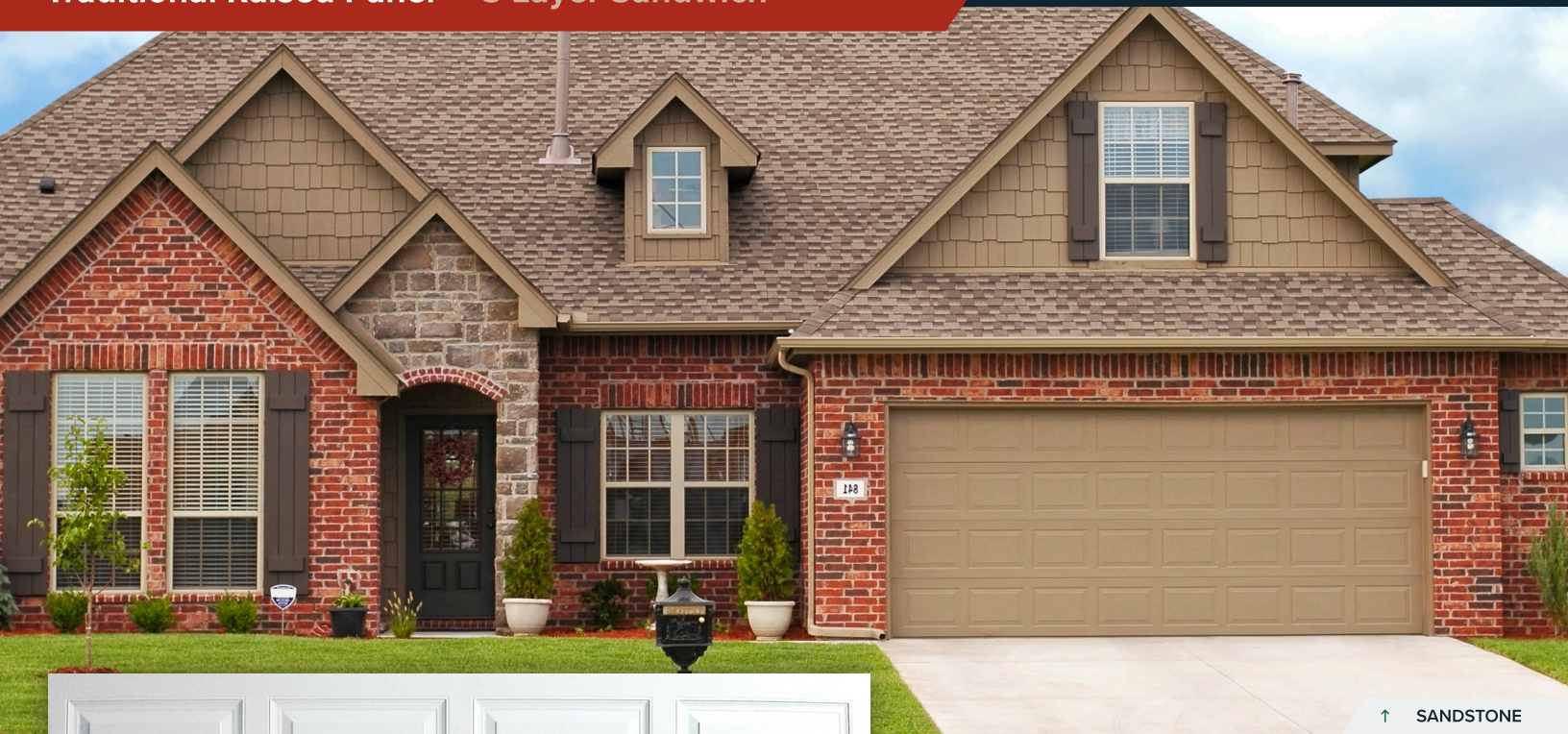
# 3610

INSULATED SANDWICH

**doorLink**  
Manufacturing, Inc.®

Traditional Raised Panel 3 Layer Sandwich

RAISED PANELS



↑ SANDSTONE



↑ WHITE

## Traditional Raised Panel

2" thick insulated steel sandwich panel constructed of top quality materials. Highly detailed raised panel, deep woodgrain texture, and two coat prefinished paint system all combine to enhance the beauty of your home.

- 2" thick insulated 3 layer sandwich panel
- 1.0 mil paint with 7 color options
- 8 window options
- R-value 10.25
- Steel interior skin



WHITE



ALMOND



DESERT TAN



SANDSTONE



BROWN



GRAY



BLACK

*\*Colors may vary from actual product*



#### FEATURES



##### 26 GAUGE STEEL

Hot dipped galvanized steel construction with hemmed inside return rail provides superior strength and durability.



##### 20 GAUGE HOT DIPPED STEEL HINGE PLATES

Galvanized steel hinge plates run the full height of each section at all hinge locations to facilitate the attachment of hinges, handles, struts, and step plates.



##### TONGUE AND GROOVE MEETING RAILS

For superior strength and better sealing against wind, rain, and snow.



##### RIGID ALUMINUM RETAINER WITH WEATHERSTRIP

Provides added strength while securing replaceable U-type bottom astragal weatherstrip to help keep the elements out.



##### R-VALUE 10.25

Sandwich type construction with polystyrene insulation pressure bonded between two sheets of hot dipped galvanized steel enhances your home's energy savings, makes your door operation quieter, and reduces exterior noise in your garage.



##### CFC FREE EXPANDED POLYSTYRENE

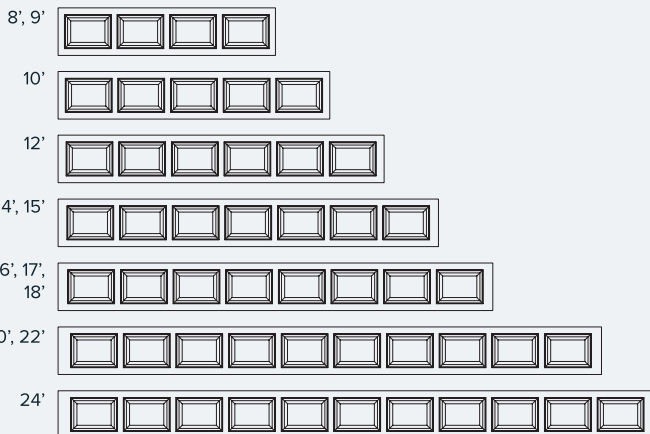
Environmentally friendly insulation that will not degrade with vibration or time.

#### WINDOW GLASS OPTIONS

See website for glass options

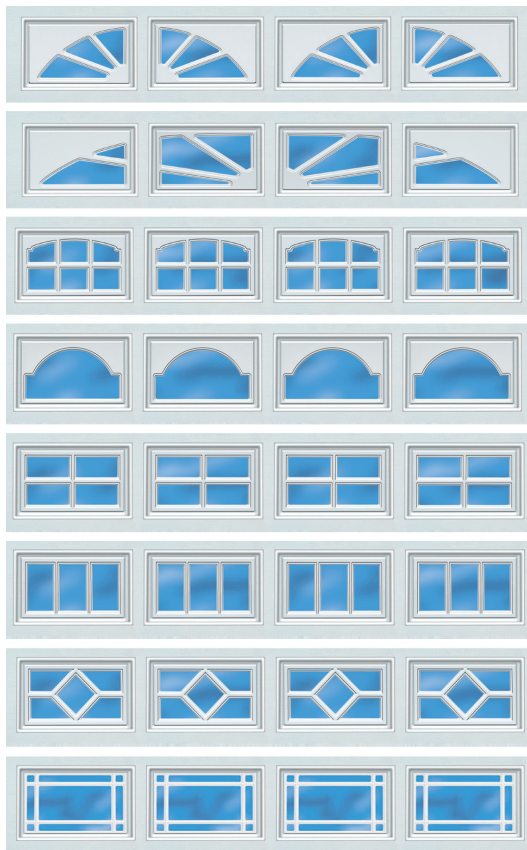
#### SIZE OPTIONS

##### WIDTHS:



HEIGHTS: 6'6", 6'9", 7'0", 7'6", 7'9", 8'0"

#### WINDOW OPTIONS



#306  
Sherwood

#305  
Williamsburg

#591  
Cascade

#393  
Cathedral

#397  
Stockton

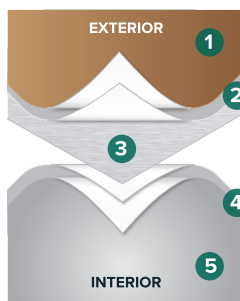
#597  
Stockbridge

#320  
Waterton

#897  
Prairie

*\*Not all glazing options may be available from all distributors. No glazing on 18" sections.*

#### PAINT LAYERS

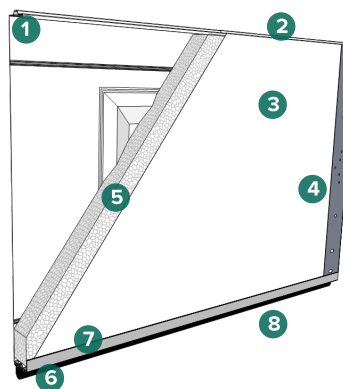


#### 1.0 MIL PAINT SYSTEM

Includes .25 mil rust inhibiting primer and .75 mil exterior top coat that resists fading and chalking, while providing consistent color from panel to panel and more durability.

- 1 Paint - .75 MIL
- 2 Primer - .25 MIL
- 3 Steel
- 4 Primer - .2 MIL
- 5 Paint - .3 MIL

#### CONSTRUCTION



- 1 Tongue and groove meeting rails
- 2 2" thick section
- 3 Pebble grain embossed interior backskin
- 4 20 gauge hot dipped galvanized steel end caps
- 5 CFC free expanded polystyrene insulation
- 6 Replaceable U-Type vinyl bottom weatherstrip
- 7 20 gauge full vertical steel hinge plate for hardware attachment
- 8 Extruded aluminum weatherstrip retainer

# 3620

INSULATED SANDWICH

**doorLink**  
Manufacturing, Inc.®

Short Recessed Panel 3 Layer Sandwich

CARRIAGE HOUSE PANELS



↑ SANDSTONE



↑ WHITE

## Short Recessed Panel

2" thick insulated steel sandwich panel constructed of top quality materials. Highly detailed short recessed panel, deep pebble grain texture, and two coat prefinished paint system all combine to enhance the beauty of your home.

- 2" thick insulated 3 layer sandwich panel
- 1.0 mil paint with 10 color options
- 6 window options
- R-value 10.25
- Steel interior skin



WHITE



ALMOND



DESERT TAN



SANDSTONE



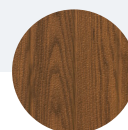
BROWN



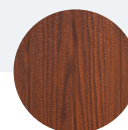
GRAY



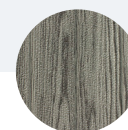
BLACK



OAK



WALNUT



DRIFTWOOD

*\*Colors may vary from actual product*



#### FEATURES



##### 26 GAUGE STEEL

Hot dipped galvanized steel construction with hemmed inside return rail provides superior strength and durability.



##### 20 GAUGE HOT DIPPED STEEL HINGE PLATES

Galvanized steel hinge plates run the full height of each section at all hinge locations to facilitate the attachment of hinges, handles, struts, and step plates.



##### TONGUE AND GROOVE MEETING RAILS

For superior strength and better sealing against wind, rain, and snow.



##### DIRECTIONAL WOOD GRAIN PATTERN

Directional wood grain pattern gives the appearance of traditional wood doors.



##### RIGID ALUMINUM RETAINER WITH WEATHERSTRIP

Provides added strength while securing replaceable U-type bottom astragal weatherstrip to help keep the elements out.



##### R-VALUE 10.25

Sandwich type construction with polystyrene insulation pressure bonded between two sheets of hot dipped galvanized steel enhances your home's energy savings, makes your door operation quieter, and reduces exterior noise in your garage.

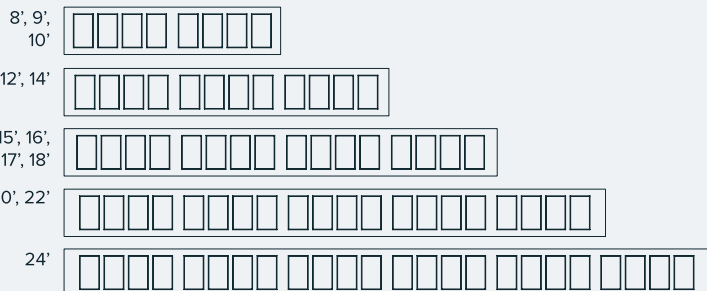


##### CFC FREE EXPANDED POLYSTYRENE

Environmentally friendly insulation that will not degrade with vibration or time.

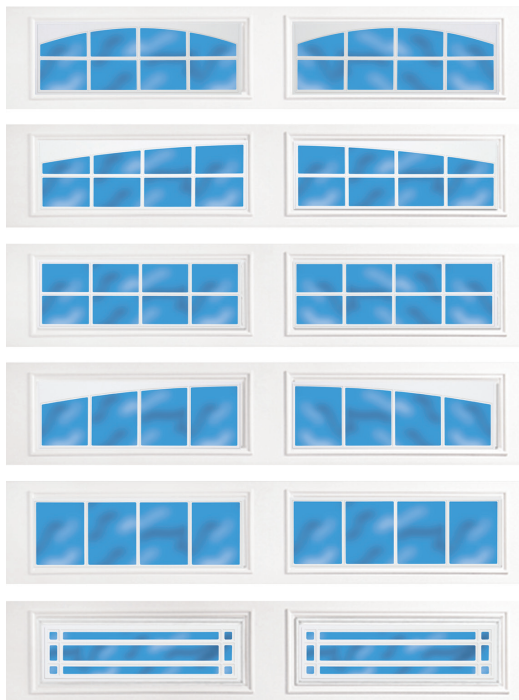
#### SIZE OPTIONS

##### WIDTHS:



HEIGHTS: 6'6", 6'9", 7'0", 7'6", 7'9", 8'0"

#### WINDOW OPTIONS

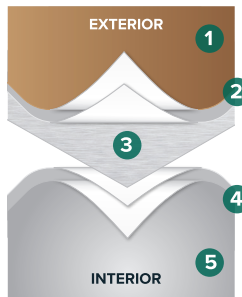


#### WINDOW GLASS OPTIONS

See website for glass options

*\*Not all glazing options may be available from all distributors. No glazing on 18" sections. Not all window inserts align with panel stamp design.*

#### PAINT LAYERS

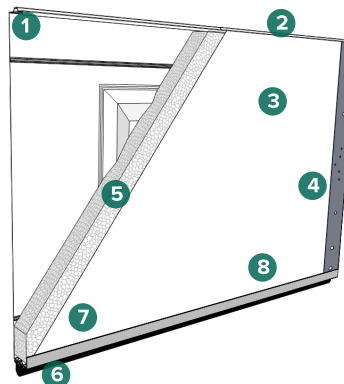


#### 1.0 MIL PAINT SYSTEM

Includes .25 mil rust inhibiting primer and .75 mil exterior top coat that resists fading and chalking, while providing consistent color from panel to panel and more durability.

- 1 Paint - .75 MIL
- 2 Primer - .25 MIL
- 3 Steel
- 4 Primer - .2 MIL
- 5 Paint - .3 MIL

#### CONSTRUCTION



- 1 Tongue and groove meeting rails
- 2 2" thick section
- 3 Pebble grain embossed interior backskin
- 4 20 gauge hot dipped galvanized steel end caps
- 5 CFC free expanded polystyrene insulation
- 6 Replaceable U-Type vinyl bottom weatherstrip
- 7 20 gauge full vertical steel hinge plate for hardware attachment
- 8 Extruded aluminum weatherstrip retainer



# 3630

INSULATED SANDWICH

**doorLink**  
Manufacturing, Inc.®

Grooved Panel 3 Layer Sandwich

CARRIAGE HOUSE PANELS



ALMOND | STOCKTON WINDOW



WHITE | STOCKTON WINDOW

## Grooved Panel

2" thick insulated steel sandwich panel constructed of top quality materials. Highly detailed grooved panel, deep pebble grain texture, and two coat prefinished paint system all combine to enhance the beauty of your home.

- 2" thick insulated 3 layer sandwich panel
- 1.0 mil paint with 10 color options
- 6 window options
- R-value 10.25
- Steel interior skin



WHITE



ALMOND



DESERT TAN



SANDSTONE



BROWN



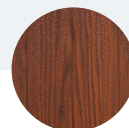
GRAY



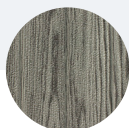
BLACK



OAK



WALNUT



DRIFTWOOD

\*Colors may vary from actual product

#### FEATURES



##### 26 GAUGE STEEL

Hot dipped galvanized steel construction with hemmed inside return rail provides superior strength and durability.



##### 20 GAUGE HOT DIPPED STEEL HINGE PLATES

Galvanized steel hinge plates run the full height of each section at all hinge locations to facilitate the attachment of hinges, handles, struts, and step plates.



##### TONGUE AND GROOVE MEETING RAILS

For superior strength and better sealing against wind, rain, and snow.



##### DIRECTIONAL WOOD GRAIN PATTERN

Directional wood grain pattern gives the appearance of traditional wood doors.



##### RIGID ALUMINUM RETAINER WITH WEATHERSTRIP

Provides added strength while securing replaceable U-type bottom astragal weatherstrip to help keep the elements out.



##### R-VALUE 10.25

Sandwich type construction with polystyrene insulation pressure bonded between two sheets of hot dipped galvanized steel enhances your home's energy savings, makes your door operation quieter, and reduces exterior noise in your garage.



##### CFC FREE EXPANDED POLYSTYRENE

Environmentally friendly insulation that will not degrade with vibration or time.

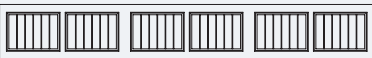
#### SIZE OPTIONS

##### WIDTHS:

8', 9',  
10'



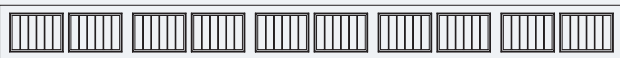
12', 14',  
15'



16', 17',  
18'



20', 22'



HEIGHTS: 6'6", 6'9", 7'0", 7'6", 7'9", 8'0"

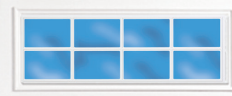
#### WINDOW OPTIONS



#287  
Stockton Arch



#388  
Somerton



#387  
Stockton



#588  
Wyndbridge



#587  
Stockbridge



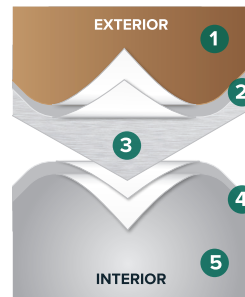
#897  
Prairie

#### WINDOW GLASS OPTIONS

See website for glass options

*\*Not all glazing options may be available from all distributors.  
No glazing on 18" sections.*

#### PAINT LAYERS

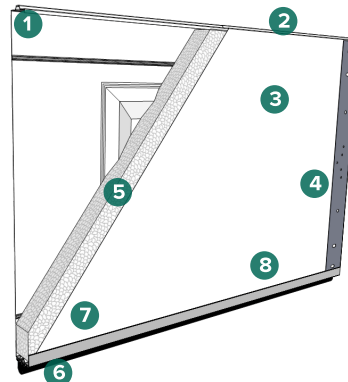


#### 1.0 MIL PAINT SYSTEM

Includes .25 mil rust inhibiting primer and .75 mil exterior top coat that resists fading and chalking, while providing consistent color from panel to panel and more durability.

- 1 Paint - .75 MIL
- 2 Primer - .25 MIL
- 3 Steel
- 4 Primer - .2 MIL
- 5 Paint - .3 MIL

#### CONSTRUCTION



- 1 Tongue and groove meeting rails
- 2 2" thick section
- 3 Pebble grain embossed interior backskin
- 4 20 gauge hot dipped galvanized steel end caps
- 5 CFC free expanded polystyrene insulation
- 6 Replaceable U-Type vinyl bottom weatherstrip
- 7 20 gauge full vertical steel hinge plate for hardware attachment
- 8 Extruded aluminum weatherstrip retainer



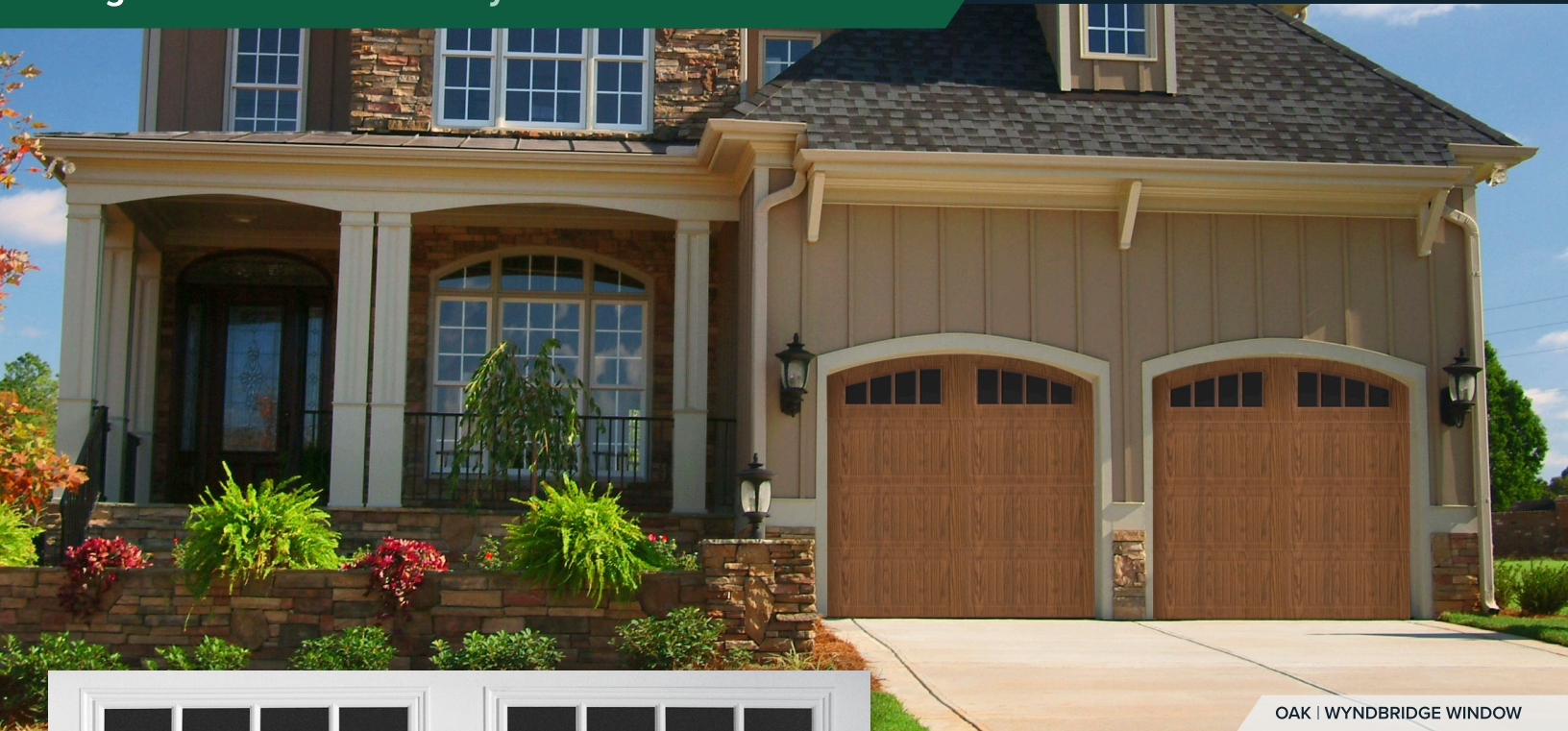
# 3640

INSULATED SANDWICH

**doorLink**  
Manufacturing, Inc.®

Long Grooved Panel 3 Layer Sandwich

CARRIAGE HOUSE PANELS



OAK | WYNDBRIDGE WINDOW



WHITE | STOCKTON WINDOW

## Long Grooved Panel

2" thick insulated steel sandwich panel constructed of top quality materials. Highly detailed long grooved panel, deep pebble grain texture, and two coat prefinished paint system all combine to enhance the beauty of your home.

- 2" thick insulated 3 layer sandwich panel
- 1.0 mil paint with 10 color options
- 6 window options
- R-value 10.25
- Steel interior skin



WHITE



ALMOND



DESERT TAN



SANDSTONE



BROWN



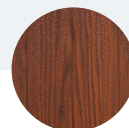
GRAY



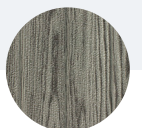
BLACK



OAK



WALNUT



DRIFTWOOD

\*Colors may vary from actual product

#### FEATURES



##### 26 GAUGE STEEL

Hot dipped galvanized steel construction with hemmed inside return rail provides superior strength and durability.



##### 20 GAUGE HOT DIPPED STEEL HINGE PLATES

Galvanized steel hinge plates run the full height of each section at all hinge locations to facilitate the attachment of hinges, handles, struts, and step plates.



##### TONGUE AND GROOVE MEETING RAILS

For superior strength and better sealing against wind, rain, and snow.



##### DIRECTIONAL WOOD GRAIN PATTERN

Directional wood grain pattern gives the appearance of traditional wood doors.



##### RIGID ALUMINUM RETAINER WITH WEATHERSTRIP

Provides added strength while securing replaceable U-type bottom astragal weatherstrip to help keep the elements out.



##### R-VALUE 10.25

Sandwich type construction with polystyrene insulation pressure bonded between two sheets of hot dipped galvanized steel enhances your home's energy savings, makes your door operation quieter, and reduces exterior noise in your garage.

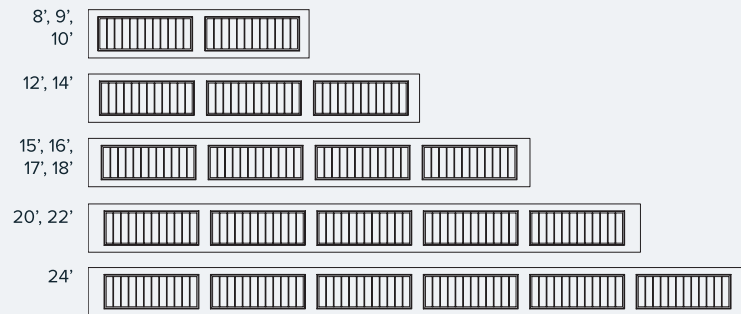


##### CFC FREE EXPANDED POLYSTYRENE

Environmentally friendly insulation that will not degrade with vibration or time.

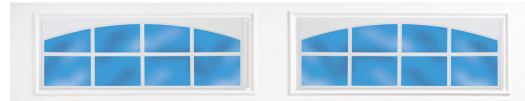
#### SIZE OPTIONS

##### WIDTHS:

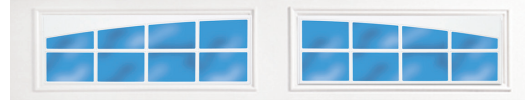


HEIGHTS: 6'6", 6'9", 7'0", 7'6", 7'9", 8'0"

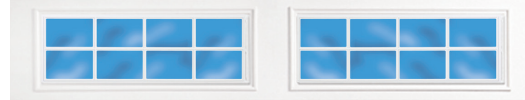
#### WINDOW OPTIONS



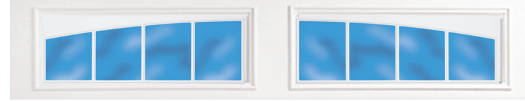
#287  
Stockton Arch



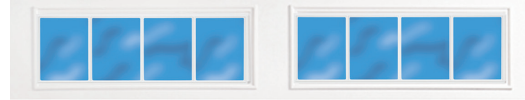
#388  
Somerton



#387  
Stockton



#588  
Wyndbridge



#587  
Stockbridge



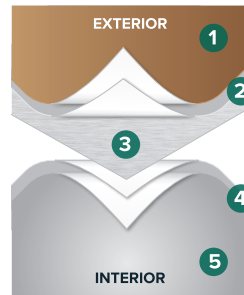
#897  
Prairie

#### WINDOW GLASS OPTIONS

See website for glass options

*\*Not all glazing options may be available from all distributors.  
No glazing on 18" sections.*

#### PAINT LAYERS

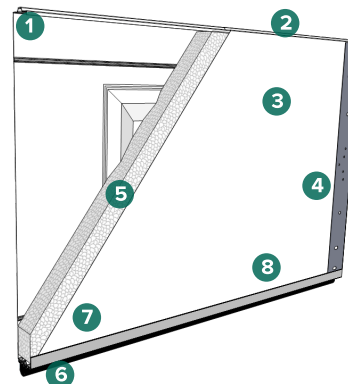


#### 1.0 MIL PAINT SYSTEM

Includes .25 mil rust inhibiting primer and .75 mil exterior top coat that resists fading and chalking, while providing consistent color from panel to panel and more durability.

- 1 Paint - .75 MIL
- 2 Primer - .25 MIL
- 3 Steel
- 4 Primer - .2 MIL
- 5 Paint - .3 MIL

#### CONSTRUCTION



- 1 Tongue and groove meeting rails
- 2 2" thick section
- 3 Pebble grain embossed interior backskin
- 4 20 gauge hot dipped galvanized steel end caps
- 5 CFC free expanded polystyrene insulation
- 6 Replaceable U-Type vinyl bottom weatherstrip
- 7 20 gauge full vertical steel hinge plate for hardware attachment
- 8 Extruded aluminum weatherstrip retainer



# 3650

INSULATED SANDWICH

**doorLink**  
Manufacturing, Inc.®

Flush Panel 3 Layer Sandwich

FLUSH PANELS



↑ GRAY | RANCH WINDOWS

## Flush Panel

2" thick insulated steel sandwich panel constructed of top quality materials. Flush panel with deep woodgrain texture and two coat prefinished paint system all combine to enhance the beauty of your home.

- 2" thick insulated 3 layer sandwich panel
- 1.0 mil paint with 7 color options
- R-value 10.25
- Steel interior skin

↑ WHITE



WHITE



ALMOND



DESERT TAN



SANDSTONE



BROWN



GRAY



BLACK

*\*Colors may vary from actual product*

#### FEATURES



##### 26 GAUGE STEEL

Hot dipped galvanized steel construction with hemmed inside return rail provides superior strength and durability.



##### ROLLED SAFETY EDGES ON SECTION JOINTS

Eliminates sharp edges, and provides extra strength.



##### 20 GAUGE HOT DIPPED STEEL HINGE PLATES

Galvanized steel hinge plates run the full height of each section at all hinge locations to facilitate the attachment of hinges, handles, struts, and step plates.



##### TONGUE AND GROOVE MEETING RAILS

For superior strength and better sealing against wind, rain, and snow.



##### RIGID ALUMINUM RETAINER WITH WEATHERSTRIP

Provides added strength while securing replaceable U-type bottom astragal weatherstrip to help keep the elements out.



##### R-VALUE 10.25

Sandwich type construction with polystyrene insulation pressure bonded between two sheets of hot dipped galvanized steel enhances your home's energy savings, makes your door operation quieter, and reduces exterior noise in your garage.



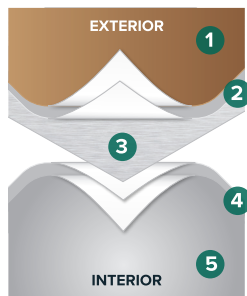
##### CFC FREE EXPANDED POLYSTYRENE

Environmentally friendly insulation that will not degrade with vibration or time.



↑ SANDSTONE

#### PAINT LAYERS

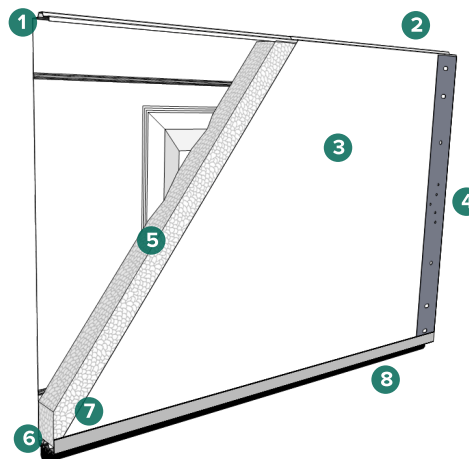


##### 1.0 MIL PAINT SYSTEM

Includes .25 mil rust inhibiting primer and .75 mil exterior top coat that resists fading and chalking, while providing consistent color from panel to panel and more durability.

- 1 Paint - .75 MIL
- 2 Primer - .25 MIL
- 3 Steel
- 4 Primer - .2 MIL
- 5 Paint - .3 MIL

#### CONSTRUCTION



- 1 Tongue and groove meeting rails
- 2 2" thick section
- 3 Pebble grain embossed interior backskin
- 4 20 gauge hot dipped galvanized steel end caps
- 5 CFC free expanded polystyrene insulation
- 6 Replaceable U-Type vinyl bottom weatherstrip
- 7 20 gauge full vertical steel hinge plate for hardware attachment
- 8 Extruded aluminum weatherstrip retainer

#### WINDOW OPTIONS

Contact your supplier for window options

#### WINDOW GLASS OPTIONS

Contact your supplier for glass options

#### SIZE OPTIONS

##### WIDTHS:

8', 9', 10', 12', 14', 15', 16', 17', 18', 20', 22', 24'

##### HEIGHTS:

6'6", 6'9", 7'0", 7'6", 7'9", 8'0"



# 3660

INSULATED SANDWICH

**doorLink**  
Manufacturing, Inc.®

Louvered Panel 3 Layer Sandwich

LOUVERED PANELS



SANDSTONE | PLAIN WINDOW



GRAY

## Louvered Panel

2" thick insulated steel sandwich panel constructed of top quality materials. Highly detailed louvered panel, deep woodgrain texture, and two coat prefinished paint system all combine to enhance the beauty of your home.

- 2" thick insulated 3 layer sandwich panel
- 1.0 mil paint with 7 color options
- 6 window options
- R-value 10.25
- Steel interior skin



WHITE



ALMOND



DESERT TAN



SANDSTONE



BROWN



GRAY



BLACK

*\*Colors may vary from actual product*

#### FEATURES



##### 26 GAUGE STEEL

Hot dipped galvanized steel construction with hemmed inside return rail provides superior strength and durability.



##### 20 GAUGE HOT DIPPED STEEL HINGE PLATES

Galvanized steel hinge plates run the full height of each section at all hinge locations to facilitate the attachment of hinges, handles, struts, and step plates.



##### TONGUE AND GROOVE MEETING RAILS

For superior strength and better sealing against wind, rain, and snow.



##### RIGID ALUMINUM RETAINER WITH WEATHERSTRIP

Provides added strength while securing replaceable U-type bottom astragal weatherstrip to help keep the elements out.



##### R-VALUE 10.25

Sandwich type construction with polystyrene insulation pressure bonded between two sheets of hot dipped galvanized steel enhances your home's energy savings, makes your door operation quieter, and reduces exterior noise in your garage.

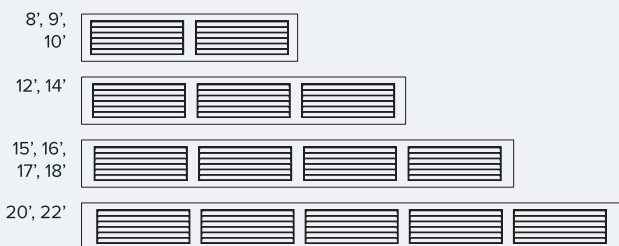


##### CFC FREE EXPANDED POLYSTYRENE

Environmentally friendly insulation that will not degrade with vibration or time.

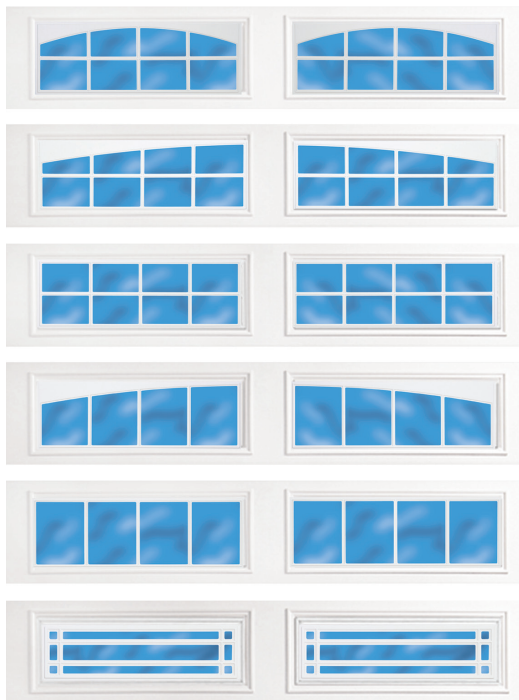
#### SIZE OPTIONS

##### WIDTHS:



**HEIGHTS:** 6'6", 6'9", 7'0", 7'6", 7'9", 8'0"

#### WINDOW OPTIONS



#287  
Stockton Arch

#388  
Somerton

#387  
Stockton

#588  
Wyndbridge

#587  
Stockbridge

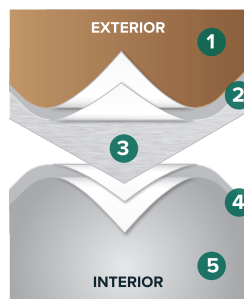
#897  
Prairie

#### WINDOW GLASS OPTIONS

See website for glass options

*\*Not all glazing options may be available from all distributors. No glazing on 18" sections.*

#### PAINT LAYERS

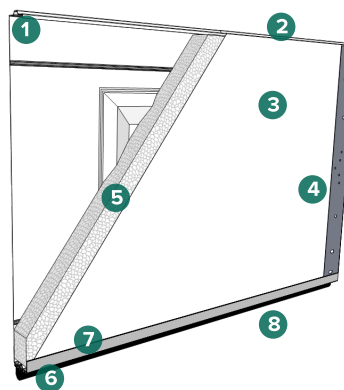


#### 1.0 MIL PAINT SYSTEM

Includes .25 mil rust inhibiting primer and .75 mil exterior top coat that resists fading and chalking, while providing consistent color from panel to panel and more durability.

- 1 Paint - .75 MIL
- 2 Primer - .25 MIL
- 3 Steel
- 4 Primer - .2 MIL
- 5 Paint - .3 MIL

#### CONSTRUCTION



- 1 Tongue and groove meeting rails
- 2 2" thick section
- 3 Pebble grain embossed interior backskin
- 4 20 gauge hot dipped galvanized steel end caps
- 5 CFC free expanded polystyrene insulation
- 6 Replaceable U-Type vinyl bottom weatherstrip
- 7 20 gauge full vertical steel hinge plate for hardware attachment
- 8 Extruded aluminum weatherstrip retainer



# 3680

INSULATED SANDWICH

**doorLink**  
Manufacturing, Inc.®

Long Recessed Panel 3 Layer Sandwich

CARRIAGE HOUSE PANELS



↑ ALMOND



↑ WHITE



WHITE



ALMOND



DESERT TAN



SANDSTONE



BROWN



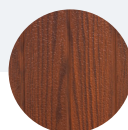
GRAY



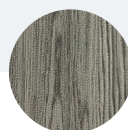
BLACK



OAK



WALNUT



DRIFTWOOD

## Long Recessed Panel

2" thick insulated steel sandwich panel constructed of top quality materials. Highly detailed long recessed panel, deep pebble grain texture, and two coat prefinished paint system all combine to enhance the beauty of your home.

- 2" thick insulated 3 layer sandwich panel
- 1.0 mil paint with 10 color options
- 6 window options
- R-value 10.25
- Steel interior skin

\*Colors may vary from actual product

#### FEATURES



##### 26 GAUGE STEEL

Hot dipped galvanized steel construction with hemmed inside return rail provides superior strength and durability.



##### 20 GAUGE HOT DIPPED STEEL HINGE PLATES

Galvanized steel hinge plates run the full height of each section at all hinge locations to facilitate the attachment of hinges, handles, struts, and step plates.



##### TONGUE AND GROOVE MEETING RAILS

For superior strength and better sealing against wind, rain and snow.



##### DIRECTIONAL WOOD GRAIN PATTERN

Directional wood grain pattern gives the appearance of traditional wood doors.



##### RIGID ALUMINUM RETAINER WITH WEATHERSTRIP

Provides added strength while securing replaceable U-type bottom astragal weatherstrip to help keep the elements out.



##### R-VALUE 10.25

Sandwich type construction with polystyrene insulation pressure bonded between two sheets of hot dipped galvanized steel enhances your home's energy savings, makes your door operation quieter, and reduces exterior noise in your garage.

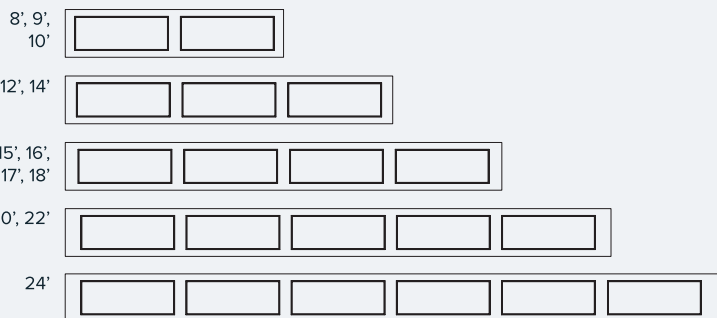


##### CFC FREE EXPANDED POLYSTYRENE

Environmentally friendly insulation that will not degrade with vibration or time.

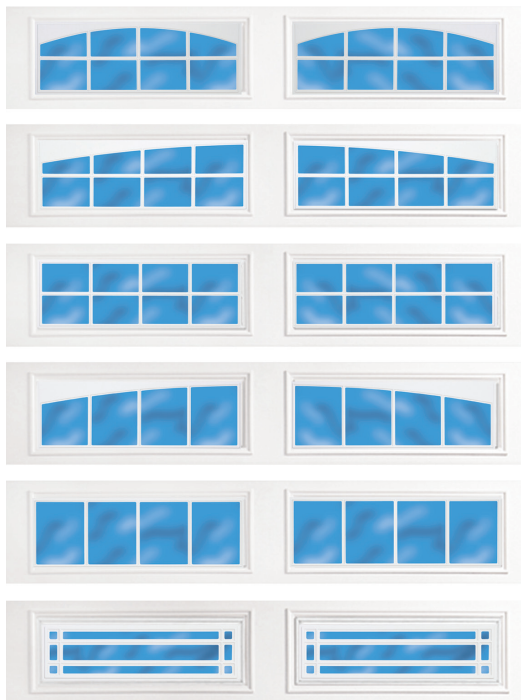
#### SIZE OPTIONS

##### WIDTHS:



HEIGHTS: 6'6", 6'9", 7'0", 7'6", 7'9", 8'0"

#### WINDOW OPTIONS

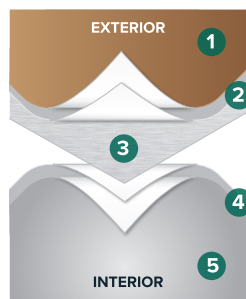


#### WINDOW GLASS OPTIONS

See website for glass options

*\*Not all glazing options may be available from all distributors. No glazing on 18" sections.*

#### PAINT LAYERS

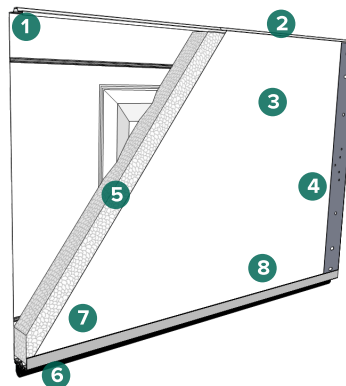


#### 1.0 MIL PAINT SYSTEM

Includes .25 mil rust inhibiting primer and .75 mil exterior top coat that resists fading and chalking, while providing consistent color from panel to panel and more durability.

- 1 Paint - .75 MIL
- 2 Primer - .25 MIL
- 3 Steel
- 4 Primer - .2 MIL
- 5 Paint - .3 MIL

#### CONSTRUCTION



- 1 Tongue and groove meeting rails
- 2 2" thick section
- 3 Pebble grain embossed interior backskin
- 4 20 gauge hot dipped galvanized steel end caps
- 5 CFC free expanded polystyrene insulation
- 6 Replaceable U-Type vinyl bottom weatherstrip
- 7 20 gauge full vertical steel hinge plate for hardware attachment
- 8 Extruded aluminum weatherstrip retainer



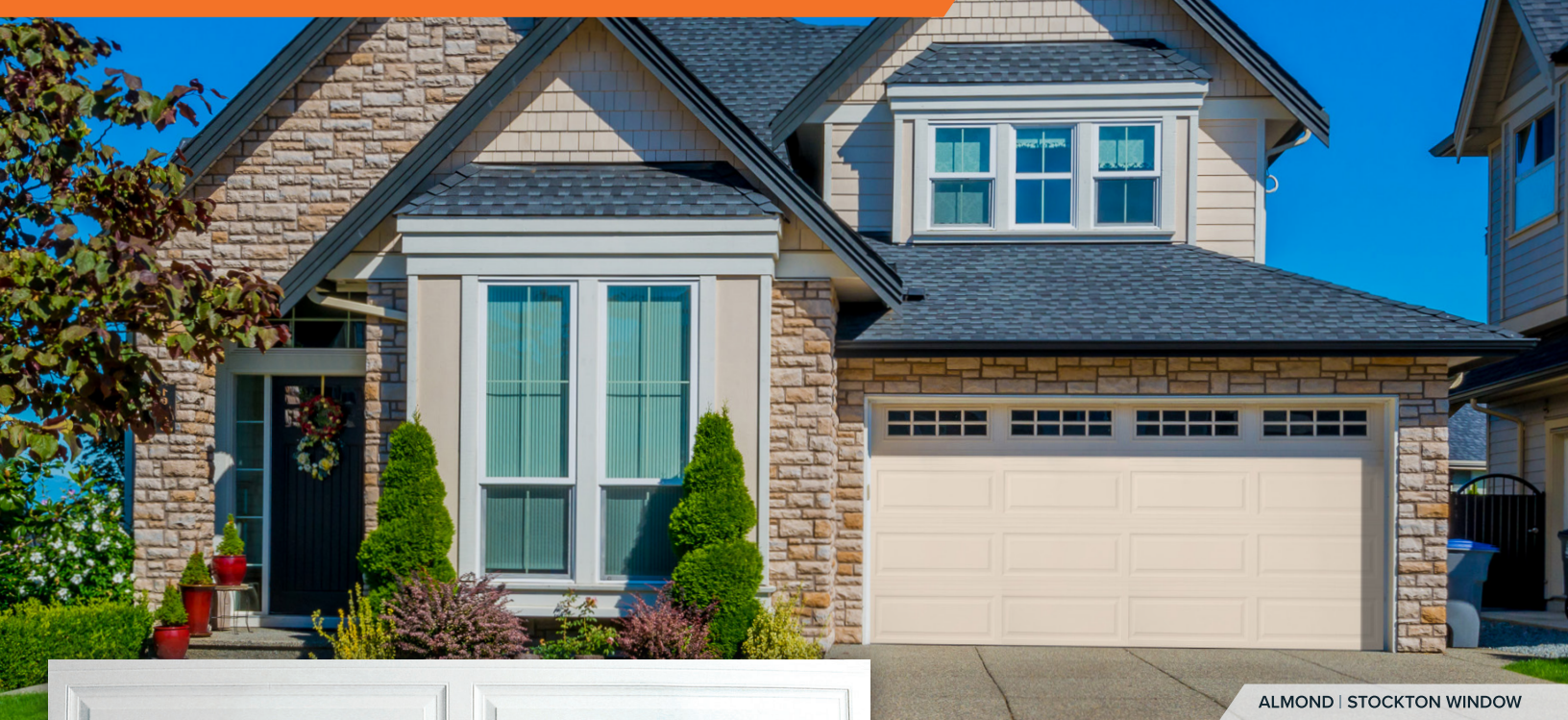
# 3690

INSULATED SANDWICH

**doorLink**  
Manufacturing, Inc.®

**Raised Ranch Panel 3 Layer Sandwich**

**RAISED PANELS**



ALMOND | STOCKTON WINDOW



WHITE



WHITE



ALMOND



DESERT TAN



SANDSTONE



BROWN



GRAY



BLACK

## Raised Ranch Panel

2" thick insulated steel sandwich panel constructed of top quality materials. Highly detailed raised ranch panel, deep woodgrain texture, and two coat prefinished paint system all combine to enhance the beauty of your home.

- 2" thick insulated 3 layer sandwich panel
- 1.0 mil paint with 7 color options
- 6 window options
- R-value 10.25
- Steel interior skin

*\*Colors may vary from actual product*

#### FEATURES



##### 26 GAUGE STEEL

Hot dipped galvanized steel construction with hemmed inside return rail provides superior strength and durability.



##### 20 GAUGE HOT DIPPED STEEL HINGE PLATES

Galvanized steel hinge plates run the full height of each section at all hinge locations to facilitate the attachment of hinges, handles, struts, and step plates.



##### TONGUE AND GROOVE MEETING RAILS

For superior strength and better sealing against wind, rain, and snow.



##### RIGID ALUMINUM RETAINER WITH WEATHERSTRIP

Provides added strength while securing replaceable U-type bottom astragal weatherstrip to help keep the elements out.



##### R-VALUE 10.25

Sandwich type construction with polystyrene insulation pressure bonded between two sheets of hot dipped galvanized steel enhances your home's energy savings, makes your door operation quieter, and reduces exterior noise in your garage.

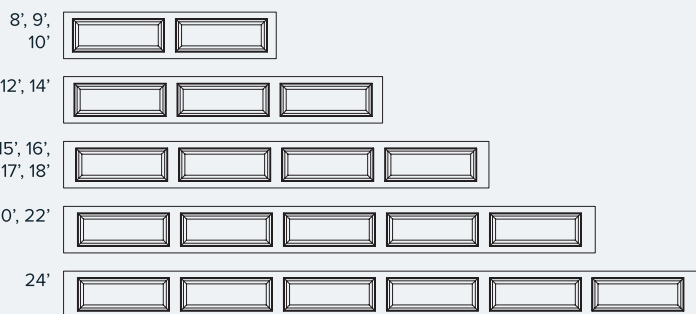


##### CFC FREE EXPANDED POLYSTYRENE

Environmentally friendly insulation that will not degrade with vibration or time.

#### SIZE OPTIONS

##### WIDTHS:



HEIGHTS: 6'6", 6'9", 7'0", 7'6", 7'9", 8'0"

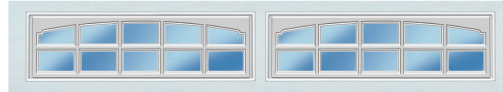
#### WINDOW OPTIONS



#306  
Sherwood



#305  
Williamsburg



#591  
Cascade



#397  
Stockton



#597  
Stockbridge



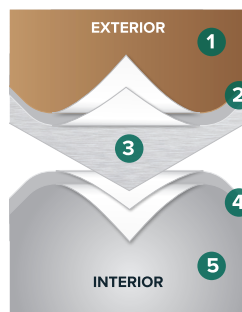
#897  
Prairie

#### WINDOW GLASS OPTIONS

See website for glass options

*\*Not all glazing options may be available from all distributors.  
No glazing on 18" sections.*

#### PAINT LAYERS

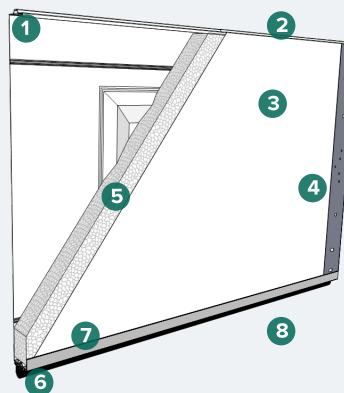


#### 1.0 MIL PAINT SYSTEM

Includes .25 mil rust inhibiting primer and .75 mil exterior top coat that resists fading and chalking, while providing consistent color from panel to panel and more durability.

- 1 Paint - .75 MIL
- 2 Primer - .25 MIL
- 3 Steel
- 4 Primer - .2 MIL
- 5 Paint - .3 MIL

#### CONSTRUCTION



- 1 Tongue and groove meeting rails
- 2 2" thick section
- 3 Pebble grain embossed interior backskin
- 4 20 gauge hot dipped galvanized steel end caps
- 5 CFC free expanded polystyrene insulation
- 6 Replaceable U-Type vinyl bottom weatherstrip
- 7 20 gauge full vertical steel hinge plate for hardware attachment
- 8 Extruded aluminum weatherstrip retainer



# 8000

**doorLink**  
Manufacturing, Inc.®

Premium Aluminum Full View Panel

COMMERCIAL/RESIDENTIAL



↑ BRONZE POWDER COATED WITH CLEAR GLASS

↑ CLEAR ANODIZED WITH SATIN GLASS



↑ CLEAR ANODIZED WITH SATIN GLASS

## Premium Aluminum Full View Panel

The right choice when maximum light and visibility are required. Ideally suited for all residential, commercial, and retail establishments. Choose from a variety of glazing options including glass, acrylic, insulated glass, or aluminum panels.

- 1/8" glass or acrylic *\*8100 Feature*
- 1/4" glass *\*8400 Feature*
- 1/2" insulated glass *\*8500 Feature*



CLEAR  
ANODIZED



WHITE POWDER  
COATED



BRONZE POWDER  
COATED



BLACK POWDER  
COATED

*\*Colors may vary from actual product*

## FEATURES



## DOOR SECTIONS

Door sections are 2" thick and consist of extruded aluminum rails and stiles assembled with 5/16" threaded rods and nuts. Glazing is sealed on all four sides and retained on all four sides with extruded aluminum snap-in beads. The end stiles have a visible width of 3 3/8". Center stiles have a visible width of 2 3/4". Top rail has a visible height of 4 1/4". Bottom rail has a visible height of 4 1/4" or 7 1/4" depending on door size and weight.

Combined meeting rails have a visible height of 2 1/2". Lower meeting rail has an integral reinforcing fin on doors over 12' 2" wide (Model 8100) or over 10' 2" wide (Models 8400 and 8500).



## FINISH

All aluminum parts are clear anodized, bronze powder coated, white powder coated, or black powder coated. Powder coated in custom colors available.



## RIGID ALUMINUM RETAINER WITH WEATHERSTRIP

Provides added strength while securing replaceable U-type bottom astragal weatherstrip to help keep the elements out.



## GLAZING

Sections can be glazed with 1/8" glass or acrylic (Model 8100), 1/4" glass (Model 8400), or 1/2" insulated glass (Model 8500). Many glazing options are available including tempered glass, tinted glass, low E glass, or laminated safety glass. 0.062" anodized aluminum panels can be used in any section.



## WIND LOAD

Consult factory for available wind load rated options.

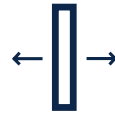
## SIZE OPTIONS

## WIDTHS:

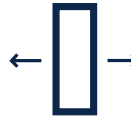
UP TO 9'2"	<input type="checkbox"/>	<input type="checkbox"/>				
9'3" TO 12'2"	<input type="checkbox"/>	<input type="checkbox"/>	<input type="checkbox"/>			
12'3" TO 17'2"	<input type="checkbox"/>	<input type="checkbox"/>	<input type="checkbox"/>	<input type="checkbox"/>		
17'3" TO 18'2"	<input type="checkbox"/>	<input type="checkbox"/>	<input type="checkbox"/>	<input type="checkbox"/>	<input type="checkbox"/>	
18'3" TO 20'2"	<input type="checkbox"/>	<input type="checkbox"/>	<input type="checkbox"/>	<input type="checkbox"/>	<input type="checkbox"/>	<input type="checkbox"/>

HEIGHTS: 21", 24"

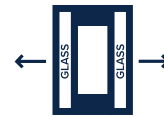
## WINDOW OPTIONS



1/8" Glass



1/4" Glass

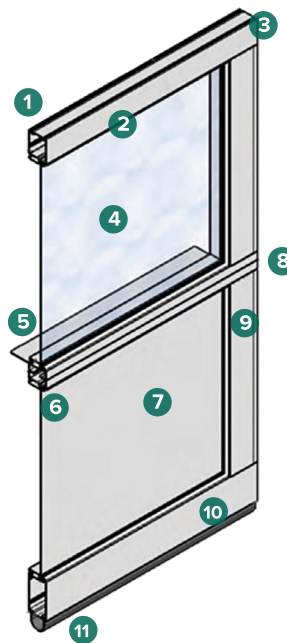


1/2" Insulated Glass

## WINDOW GLASS OPTIONS

See website for glass options

## CONSTRUCTION



- 4-1/4" Full tubular top rail
- Aluminum components are clear anodized, bronze powder coated, white powder coated, or black powder coated; powder coated in custom colors on request
- 2" thick sections
- Large glass panels allow maximum light and visibility; glass thicknesses from 1/8" to 1/2"
- 2-1/8" integral reinforcing fin on lower meeting rail for doors over 12'-2" wide (Model 8100) or over 10'-2" wide (Models 8400 and 8500)
- Glass and aluminum panels retained with extruded aluminum snap in bead
- 0.062" aluminum panels finish to match aluminum frame; aluminum panels can be provided in all sections
- 2-1/2" combined meeting rails
- 3-3/8" full tubular end stile
- Full tubular bottom rail; 4-1/4" or 7-1/4" depending on door size and weight
- Replaceable flexible vinyl bottom weatherstrip



# Woodland Creek

**doorLink**  
Manufacturing, Inc.®

## Wood Overlay Doors

## CARRIAGE HOUSE PANELS



### Wood Overlay Doors

Woodland Creek offers the beauty of real wood overlaid on the strength of steel to enhance the beauty of your home.

- Overlay 3 layer insulated sandwich panel
- Cedar overlay finish
- 5 style designs
- R-value 10.25
- Steel interior skin

*\*All doors are shipped unfinished tight knot cedar.*



MODEL A



MODEL B



MODEL C



MODEL D



MODEL E



#### FEATURES

5

##### AVAILABLE IN FIVE DESIGNS

With a complete line of window design options and may be custom ordered from any architectural drawing.

3

##### OVERLAY 3 LAYER INSULATED SANDWICH PANEL

Nominal 24 gauge steel exterior panel and a 26 gauge pebble grain embossed steel interior panel with polystyrene insulation.



##### CEDAR OVERLAY FINISH

Attached chemically to the surface creating a lasting superior bond.



##### 20 GAUGE HOT DIPPED STEEL HINGE PLATES

Galvanized steel hinge plates run the full height of each section at all hinge locations to facilitate the attachment of hinges, handles, struts, and step plates.



##### RIGID ALUMINUM RETAINER WITH WEATHERSTRIP

Provides added strength while securing replaceable U-type bottom astragal weatherstrip to help keep the elements out.



##### TONGUE AND GROOVE MEETING RAILS

For superior strength and better sealing against wind, rain, and snow.



##### R-VALUE 10.25

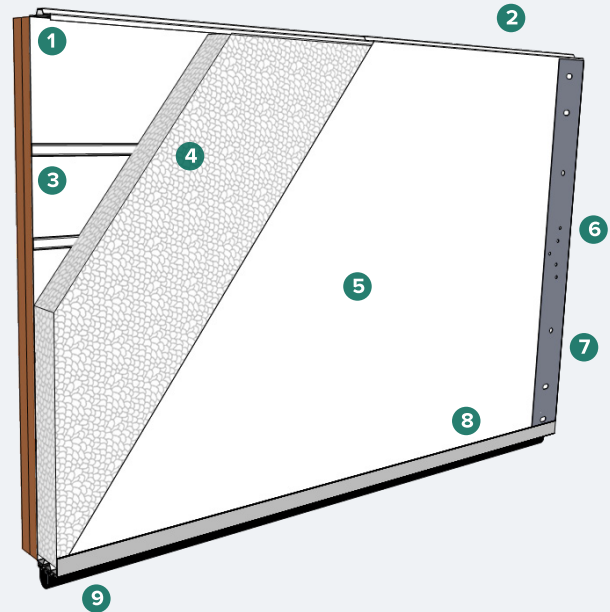
Sandwich type construction with polystyrene insulation pressure bonded between two sheets of hot dipped galvanized steel enhances your home's energy savings, makes your door operation quieter, and reduces exterior noise in your garage.



##### CFC FREE EXPANDED POLYSTYRENE

Environmentally friendly insulation that will not degrade with vibration or time.

#### CONSTRUCTION



- 1 Tongue and groove meeting rails
- 2 3 1/2" thick overlay section
- 3 Rough cedar tongue and groove overlay
- 4 Full thickness CFC free expanded polystyrene insulation pressure-bonded to exterior and interior skins
- 5 26 gauge pebble grain embossed interior skin
- 6 20 gauge vertical interior hinge plates for hardware attachment; plates extend full height of section
- 7 20 gauge galvanized steel end cap
- 8 Extruded aluminum weatherstrip retainer
- 9 Replaceable U-type vinyl bottom weatherstrip

#### HARDWARE OPTIONS



CAST  
IRON

STAMPED  
STEEL



MODEL E ↑